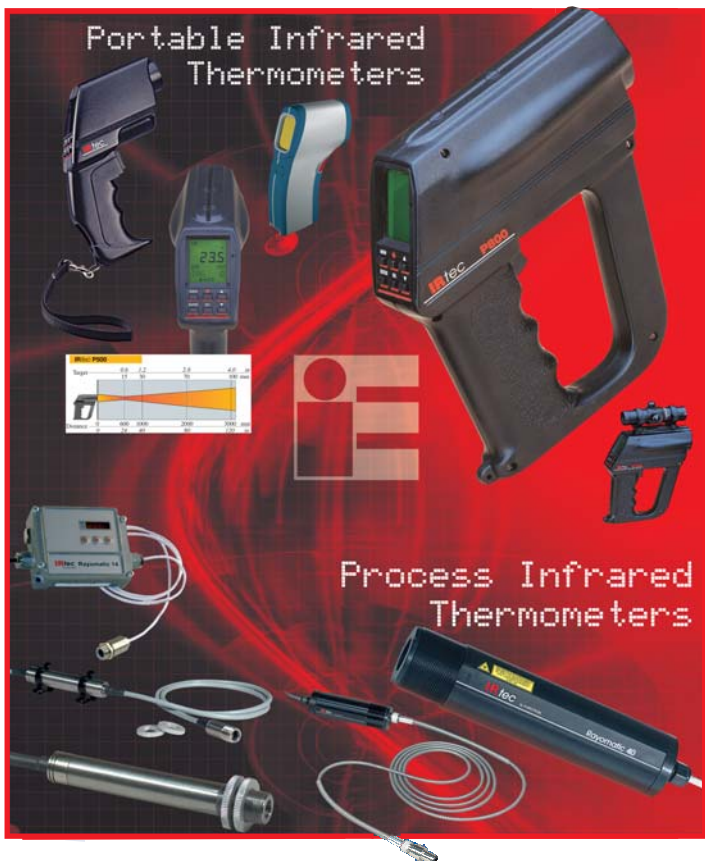


IR Temperature Products Guide

Portable and Process Infrared non Contact Thermometers

Portable Infrared
Thermometers



Process Infrared
Thermometers

For detailed information
please visit our web site:

einstrumentsgroup.com



IRtec Rayomatic 4
Compact, low cost IR sensor
 Temperature up to 930°F
 8-14 μm with Optic up to 4:1
 Tc K/J, mV/° output
 Response time up to 350 mS



IRtec Rayomatic 6
Compact, low cost IR sensor
 Temperature up to 930°F
 8-14 μm with Optic up to 8:1
 Tc K/J, mV/° output
 Response time up to 250 mS
 Serial interface for setup



IRtec Rayomatic 10
Compact IR Transmitter
 Temperature up to 2900°F
 1 / 1.6 / 5.1 / 7.9 / 8-14 μm
 Optic up to 50:1
 4-20 mA 2-wire output
 Response time up to 50 mS
 Signal processor
 Serial interface for setup & Online logging



IRtec Rayomatic 12
Split Compact Head IR Transmitter
 Temperature up to 1400°F
 5.1 / 7.9 / 8-14 μm with Optic up to 25:1
 4-20 mA 2-wire output
 Response time up to 150 mS
 Signal processor
 Serial interface for setup & Online logging



IRtec Rayomatic 14
Advanced Split Compact Head IR Sensor
 Work in ambient up to 356°F without cooling
 LCD display and keyboard.
 Three colors backlight for alarms
 Temperature up to 1650°F
 8-14 μm with Optic up to 20:1
 Tc K/J, mV/° and 4-20 mA
 Response time up to 150 mS
 Signal processor
 Serial interface for setup & Online logging



IRtec Rayomatic 20 / 40
IR Transmitter Smart with built-in Laser
 Temperature up to 2900°F
 1 / 1.6 / 3.43 / 3.9 / 4.6 / 5.1 / 7.9 / 8-14 μm
 Optic up to 100:1 - Built-in laser pointer
 4-20 mA 2-wire output
 Response time up to 28 mS
 Signal processor
 Serial Smart interface for setup & Online logging

Available with
GREEN LASER

IRtec Rayomatic 60 Fiber optic IR Transmitter

Work in ambient over 390°F without cooling
Temperature up to 3600°F
1 and 1.6 μm with Optic up to 100:1
4-20 mA 2-wire output
Response time up to 28 mS
Built-in laser pointer
Signal processor
Serial Smart interface for setup & Online logging

IRtec Rayomatic 100 2-color Fiber optic IR Transmitter

Work in ambient over 390°F without cooling
Temperature up to 4890°F
Monochromatic or Ratio operation
Optic up to 100:1 working up to 95% target
4-20 mA 2-wire output
Response time up to 38 mS
Laser pointer module
Signal processor
Serial Smart interface for setup & Online logging

IRtec MicroRay Pro Professional low cost

Temperature up to 930°F
Optic up to 12:1 - Laser pointer built-in
Contact probe built-in

IRtec MiniRay 100 Professional

Temperature up to 1400°F
Optic up to 50:1 - Laser pointer built-in
External Contact probe

IRtec P500+ Industrial Maintenance

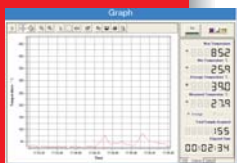
Temperature up to 1750°F
Optic up to 60:1 - Laser pointer built-in
500 memories with software
Tc K/S input

IRtec P800/P1000 Heavy Industry low temp

Temperature up to 1830°F
Optic up to 100:1 - Dual Laser pointer built-in
500 memories with software
Tc K/S input

IRtec P1300/P1600/P2000 Heavy Industry High Temperature

Temperature up to 3630°F
Optic up to 200:1 - Dual Laser pointer built-in
500 memories with software
Tc K/S input



IRSetup / Logman Software

Windows 98/2000/XP
 User friendly operator interface
 IRtec Rayomatic configuration setup
 Signal processing setup
 Real time graph capability
 Datalogging capability
 Data export to Excel™ format

IRtec Programmer

To setup signal processor on all IRtec Rayomatic
 Diagnostic tool

IRtec Remote Display

Remote digital display for all IRtec Rayomatic
 Remote temperature indication
 Setup of Signal processor
 Built-in Alarms

Digimax II Universal panel meters

Standard 4digit, 1/8 DIN
 Universal V, mA IR, Tc and Rtd
 Alarms and RS485 serial communication
 Built-in 18V power supply output
 4-20 mA output

Digimax III Universal panel meters

Standard 4digit, 1/32 DIN
 Universal V, mA IR, Tc and Rtd
 Alarms and RS485 serial communication
 Built-in 18V power supply output
 4-20 mA output

Digimax VR18 Video Graphic Recorder

Graphic TFT 1/4 VGA recorder
 Universal mA, V, Tc and Rtd
 Up to 18 channels
 Built-in 18V power supply output
 Ethernet, RS232, RS485, RS422 interface
 Observer II Windows software